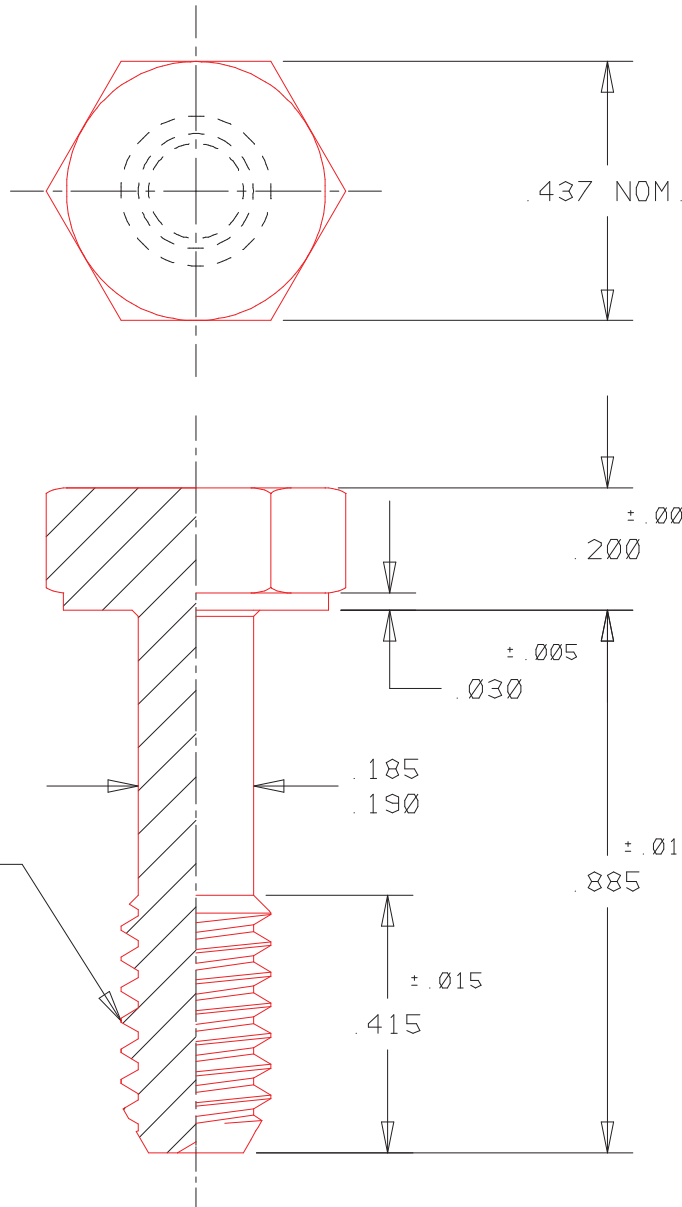


ACTUAL SIZE




THREAD:
1/4-20 UNC-2A

NOTICE: CONFIDENTIAL PROPRIETARY INFORMATION. THIS PRINT CONTAINS IDEAS, INFORMATION, AND INTELLECTUAL PROPERTY WHICH ARE THE EXCLUSIVE PROPERTY OF PENN ENGINEERING & MANUFACTURING CORP. RECIPIENT MUST KEEP THE INFORMATION DISCLOSED HEREIN CONFIDENTIAL AND RECIPIENT IS EXPRESSLY PROHIBITED FROM COPYING OR PUBLICATION OF THIS PRINT EXCEPT TO OTHERS IN THEIR ORGANIZATION ON A NEED-TO-KNOW BASIS.

A	7-9-96	96-1326
REL	6-5-91	-
REV	DATE	ECN #

© 1996 Penn Engineering & Manufacturing Corp.

THREAD	1/4-20 UNC-2A	MOUNTING HOLE:	N/A				
MATERIAL	AISI 300 SERIES STAINLESS STEEL	PANEL THICKNESS:	N/A				
HEAT TREAT	NONE	MAX. PANEL HARDNESS:	N/A				
FINISH	PASSIVATED AND/OR TESTED	MIN. ϕ TO EDGE DISTANCE:	N/A				
FINISH SPEC	ASTM A380	 PEM[®] PENN ENGINEERING & MANUFACTURING CORP. DANBORO, PENNSYLVANIA 18916					
DESC	SPECIAL HEX HEAD SCREW						
CAD NO. 39246	SCALE 3x	CHK BY	DATE	BY DB	DATE 7-15-96	NO. YC3-8901-2	REV A