

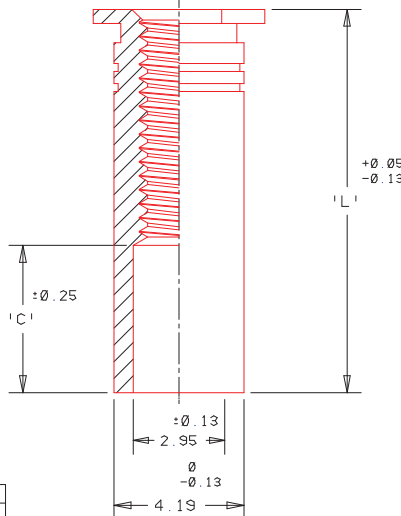
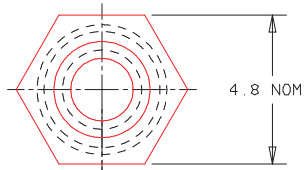
Rev B v1 Printed 2015-10-28

PART NUMBER	L	C
YC3-4857-1	12.37	4.45
YC3-4857-2	17.45	9.53
YC3-4857-3	18.36	10.44
YC3-4857-4	23.44	15.52
YC3-4857-7	9.53	1.27



ACTUAL SIZE


MM	INCH
0.05	002
0.08	003
0.13	005
0.25	010
0.45	018
1	039
1.27	050
2.5	098
2.95	116
4.19	165
4.2	165
4.45	175
4.8	189
6	236
9.53	375
10.44	411
12.37	487
15.52	611
17.45	687
18.36	723
23.44	923



NOTICE: CONFIDENTIAL PROPRIETARY INFORMATION. THIS PRINT CONTAINS IDEAS, INFORMATION, AND INTELLECTUAL PROPERTY WHICH ARE THE EXCLUSIVE PROPERTY OF PENN ENGINEERING & MANUFACTURING CORP. RECIPIENT HAS RECEIVED THIS INFORMATION IN CONFIDENCE AND IS TO BE USED ONLY FOR THE PURPOSES SPECIFIED. ANY REPRODUCTION, COPYING OR PUBLICATION OF THIS PRINT EXCEPT TO OTHERS IN THEIR ORGANIZATION ON A NEED-TO-KNOW BASIS.

B	4-18-97	97-0482
A	12-4-84	-
REV	DATE	ECN #

© 1997 Penn Engineering & Manufacturing Corp.

THREAD	M2.5 x 0.45-6H	MOUNTING HOLE:	4.2 $\begin{matrix} +0.08 \\ 0 \end{matrix}$				
MATERIAL	303 SERIES STAINLESS STEEL	PANEL THICKNESS:	1 MIN.				
HEAT TREAT	NONE	MAX. PANEL HARDNESS:	HRB 70				
FINISH	PASSIVATED AND/OR TESTED	MIN. $\phi$ TO EDGE DISTANCE:	6				
FINISH SPEC	ASTM A380	 <b>PENN ENGINEERING &amp; MANUFACTURING CORP.</b> DANBORO, PENNSYLVANIA 18916					
DESC	SELF CLINCHING STANDOFF						
CAD NO. 42782	SCALE 7x	CHK BY	DATE	BY PK	DATE 4-29-97	NO. YC3-4857	REV B