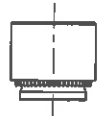


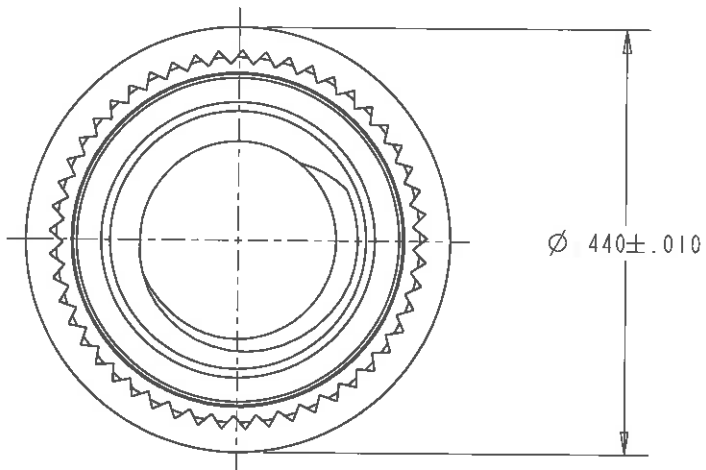
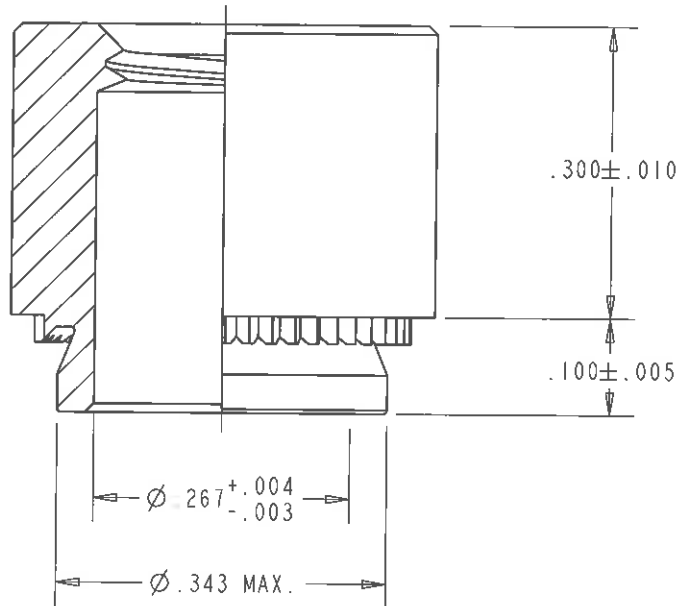
NOTES:

PERFORMANCE WHEN PROPERLY INSTALLED INTO COLD ROLLED STEEL PANEL.

INSTALLATION: 6000-8000 LBS.
 PUSH-OUT: 400 LBS




ACTUAL SIZE



© 2008 PennEngineering

NOTICE: CONFIDENTIAL PROPRIETARY INFORMATION. THIS PRINT CONTAINS IDEAS, INFORMATION, AND INTELLECTUAL PROPERTY WHICH ARE THE EXCLUSIVE PROPERTY OF PENNENGINEERING. RECIPIENT MUST KEEP THE INFORMATION DISCLOSED HEREIN CONFIDENTIAL AND RECIPIENT IS EXPRESSLY PROHIBITED FROM COPYING OR PUBLICATION OF THIS PRINT EXCEPT TO OTHERS IN THEIR ORGANIZATION ON A NEED-TO-KNOW BASIS.

D	05/05/09	09-1098
REV	DATE	ECN #

THREAD:	1/4-20 UNC-2B	MOUNTING HOLE:	.344	+ .003 - .000					
MATERIAL:	300 SERIES STAINLESS STEEL	PANEL THICKNESS:	.106 MIN.						
HEAT TREAT:	NONE	MAX. PANEL HARDNESS:	HRb 70						
FINISH:	PASSIVATED AND/OR TESTED	CENTERLINE-TO-EDGE:	.340						
FINISH SPEC.:	ASTM A380	 PennEngineering®							
DESCRIPTION:	SELF-CLINCHING RECEPTACLE NUT								
GEN. DRW:	N10-CSTD	SCALE:	5x	FROM FILE:	C17-0061	CHK BY:	DWG NO. YC3-2188-1	REV:	D