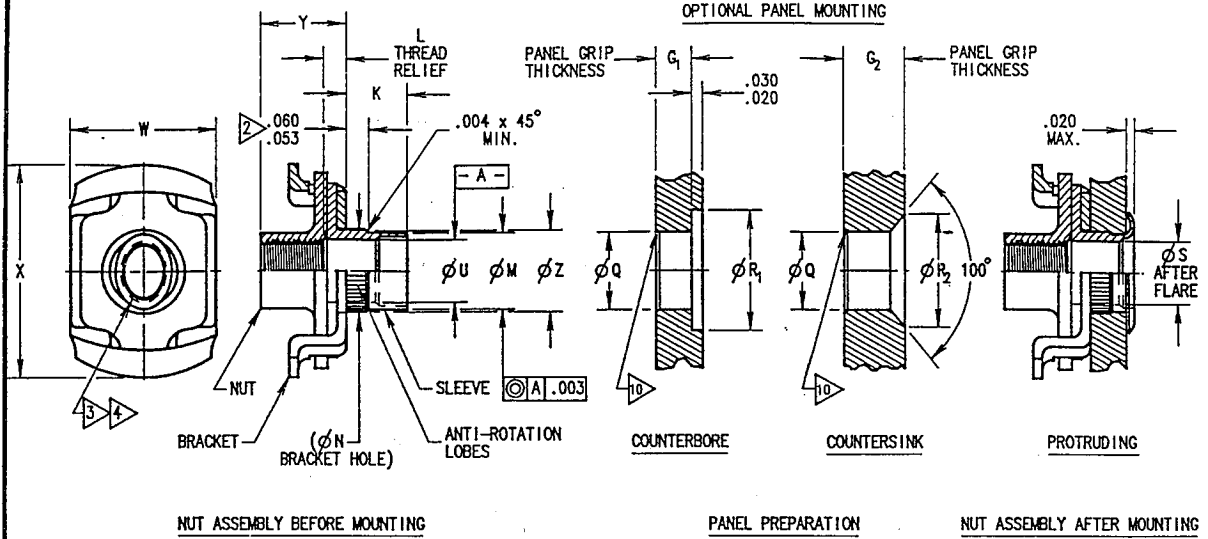


PHITS AND INSTALLATION PROCEDURES GOVERNED BY PHITS: NUMBERS 3, 465, 324 AND 3, 760, 873. PLUS OTHERS PENDING.



PART NUMBER CALLOUT

RGHCT 6010 L -10-(-)-(-)

CODE	(L)	±.025	Y
1	.068	.230	
2	.113	.295	
3	.176	.357	
4	.239	.420	

MODEL
SERIES

GRIP CODE	SUB-PANEL GRIP THICKNESS		K
	G ₁	G ₂	
AA	N/A	.055-.073	.073
A	.031-.062	.074-.106	.099
B	.063-.094	.107-.133	.130
C	.095-.125	.134-.165	.161
D	.126-.156	.166-.196	.192
E	.157-.187	.197-.227	.223
F	.188-.218	.228-.258	.254
G	.219-.250	.259-.289	.285
H	.251-.281	.290-.320	.316
J	.282-.312	.321-.351	.347
K	.313-.343	.352-.382	.378
L	.344-.374	.383-.413	.409
M	.375-.405	.414-.444	.440
N	.406-.436	.445-.475	.471
P	.437-.467	.476-.506	.502
R	.468-.498	.507-.537	.533
S	.499-.529	.538-.568	.564
T	.530-.560	.569-.599	.595
U	.561-.591	.600-.630	.626
Y	.592-.622	.631-.661	.657
W	.623-.653	.662-.692	.688
X	.654-.684	.693-.723	.719
Y	.685-.715	.724-.754	.750

THREAD SIZE PER MIL-S-8879	LBS./100		
	1,2	3	4
.190-32-UNJF-38	.38	.42	.45

CODE	NUT TYPE
L	SELF-LOCKING

phi M	(phi N)	phi Q	phi R1	phi R2	phi S	phi U	W	X	(phi Z)
MAX. MIN.	MAX. MIN.	MAX. MIN.	MAX. MIN.	MAX. MIN.	MAX. MIN.	MAX. MIN.	MAX. MIN.	MAX. MIN.	MAX. MIN.
.261 .257	.280 .2656	.378 .358	.1975 .204	.201 .390	.572 .275				

MATERIAL:

NUT: (A-286) CRES PER AMS 5525 HEAT TREAT TO 160 KSI MINIMUM ULTIMATE TENSILE STRENGTH.
SLEEVE: (304) CRES PER AMS 5639 OR AMS 5514 (305) OR EQUIV.
BRACKET: (17-7 PH) CRES PER AMS 5528 HEAT TREAT TO 180 KSI MINIMUM ULTIMATE TENSILE STRENGTH.

FINISH:

ALL COMPONENTS: PASSIVATE PER QQ-P-35 & CADMIUM PLATE PER QQ-P-416, TYPE 11, CL.2.

NUT: DRI-FILM LUBRICANT PER MIL-L-46010.
SLEEVE: DYED RED FOR COLOR CODING.

NOTES:

1. "R₂" DIMENSION FOR "AA" GRIP LENGTH IS: .315
2. .023/.030 LOBES HEIGHT FOR "AA" & "A" GRIPS.
3. A MINIMUM OF TWO THREADS ARE DEFORMED TO PRODUCED SELF-LOCKING ACTION PER MIL-N-25027.
4. NUT ELEMENT HAS .060 TOTAL FLOAT WITHIN THE BRACKET.
5. FOR NUT ELEMENT REPLACEMENT P/N, SEE DWG. S-0877.
6. NUT ELEMENT REMOVAL TOOL AVAILABLE, P/N RB6527.
7. NUT ELEMENT COLOR CODE PER PCD: 160147.
SELF-LOCKING NUTS: NATURAL DARK GRAY (DRI-FILM)
8. FOR HIGH VOLUME INSTALLATION RATES, ALTERNATE POWER TOOLING IS AVAILABLE. SEE SHEET 2 OF 2 FOR INSTALLATION TOOLS.
9. TO OBTAIN ADDITIONAL WEIGHTS ADD INCREMENTS OF .020 PER LETTER CODE.
10. .010 x 45° CHAMFER REQUIRED FOR INSTALLATION IN 7075 AND 7050 ALUMINUM ALLOYS.
11. SEE SHEET 2 OF 2 FOR INSTALLATION TOOLS.

ORIGINAL
 Red Ink Indicates
 Original Copy

HUCK LAKEWOOD
CONTROLLED DISTRIBUTION

AREA NO. 3

CONFIGURATION CONTROL
CENTER

REVISIONS				TOLERANCES DIMENSIONS IN INCHES UNLESS OTHERWISE SPECIFIED FRACTIONS ± 1/32 ANGLES ± 2° 2 PLACE DECIMALS ± .02 3 PLACE DECIMALS ± .015		DATE 05/22/91		DEUTSCH FASTENER CORPORATION 3969 PARAMOUNT BLVD., LAKEWOOD, CA 90712	
NC	EOR#5331	05/22/91	JR			DR	ROBINSON	NUT PLATE RIVETLESS, SPECIAL SLEEVE DIAMETER, (450°F), CLOSE TOLERANCE, REPAIR	
REV	E.O. NO.	DATE	BY	APPD.	PREPARED IN ACCORDANCE WITH MIL-STD-100 A	CHK	CHICKEN	APPO	
					THIRD ANGLE PROJECTION DUAL DIMENSIONING IN MM TOL:	MATERIAL NOTED		SIZE	CODE IDENT NO.
						FINISH NOTED		B	97928
								PART NO.	RGHCT6010L
								DWG NO.	S-3321
								SCALE NONE	RD:05/25/91 SHEET 1 OF 2

53321

PNEUMATIC TOOL

ASSEMBLY PART NUMBER	INSTALLATION	FORMER ASSEMBLY	USE ON
PTRM8503CB-10	C'BORE	GFRMB-10	RGHFCT6010 L -10-()
PTRM8503CS-10	C'SINK	GFRMS-10	

HAND TOOL

ASSEMBLY PART NUMBER	INSTALLATION	NOSE PIECE ASSEMBLY	USE ON
DCST8608-10-()-()	C'BORE	DCSN86138-10	RGHFCT6010 L -10-()
DCST8608-10-()-()	C'SINK	DCSN86138-10	

ARBOR PRESS TOOL

ASSEMBLY PART NUMBER	INSTALLATION	USE ON
MCT8659CB-10	C'BORE	RGHFCT6010 L -10-()
MCT8659CS-10	C'SINK	

AIR HYDRAULIC TOOL

ASSEMBLY PART NUMBER	INSTALLATION	NOSE PIECE ASSEMBLY	USE ON
DT()3008CB-10	C'BORE	DT3014CB-10	RGHFCT6010 L -10-()
DT()3008CS-10	C'SINK	DT3014CS-10	

(2 of 2)

HUCK LAKEWOOD

CONTROLLED DISTRIBUTION

AREA NO. 3

CONFIGURATION CONTROL CENTER

EXAMPLE: DT()3004CS-10

CODE	TYPE OF INSTALLATION POWER UNIT
I	INLINE MOTOR INTEGRATED WITH BOOSTER
P	PISTOL GRIP MOTOR WITH REMOTE BOOSTER
R	REMOTE CYLINDER FOR LIMITED ACCESS

ORIGINAL
Red Ink Indicates
Original Copy

TOLERANCES DIMENSIONS IN INCHES UNLESS OTHERWISE SPECIFIED FRACTIONS ± 1/32 ANGLES ± 2° 2 PLACE DECIMALS ± .02 3 PLACE DECIMALS ± .015				DATE 05/22/91 DR ROBINSON CHK <i>[Signature]</i> 22MAY91 APPD <i>[Signature]</i>	DEUTSCH FASTENER CORPORATION 3969 PARAMOUNT BLVD., LAKEWOOD, CA 90712 NUT PLATE RIVETLESS, SPECIAL SLEEVE DIAMETER, (450°F), CLOSE TOLERANCE, REPAIR								
PREPARED IN ACCORDANCE WITH MIL-STD-100 A THIRD ANGLE PROJECTION DUAL DIMENSIONING IN MM MM TOL:	MATERIAL NOTED FINISH NOTED	SIZE B CODE IDENT NO. 97928 PART NO. RGHFCT6010 DWG NO. S-3321	SCALE NONE RD:05/25/91 SHEET 2 OF 2										
REVISIONS <table border="1"> <thead> <tr> <th>REV</th> <th>E.O. NO.</th> <th>DATE</th> <th>BY</th> <th>APPD.</th> </tr> </thead> <tbody> <tr> <td>NC</td> <td>EOR 5331</td> <td>05/22/91</td> <td>JR</td> <td><i>[Signature]</i></td> </tr> </tbody> </table>				REV	E.O. NO.	DATE	BY	APPD.	NC	EOR 5331	05/22/91	JR	<i>[Signature]</i>
REV	E.O. NO.	DATE	BY	APPD.									
NC	EOR 5331	05/22/91	JR	<i>[Signature]</i>									