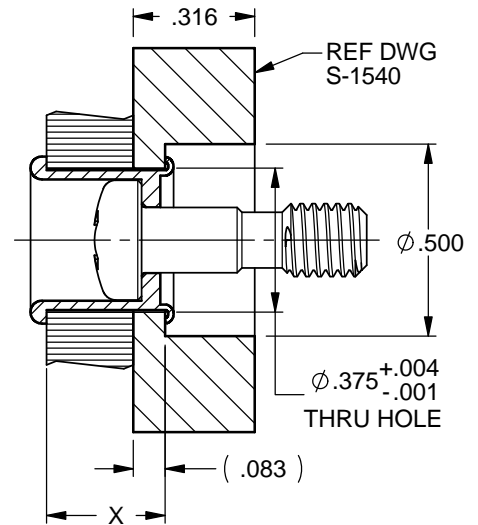


**SCREW ASSEMBLY BEFORE MOUNTING**

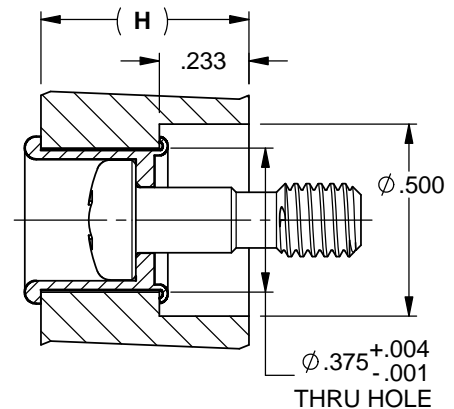


**SPACER APPLICATION**

**PART NUMBER CALLOUT**

PLB 7900 ( )-( )-( )

MODEL	SERIES	LENGTH CODE	L		
		5	.641		
		6	.837		
		7	.950		
		GRIP CODE	X ±.020	Y	(H)
		E	.312	.371	.545
		F	.470	.528	.703
		THREAD SIZE CODE	THREAD SIZE PER MIL-S-8879		LEAD
		10	.190-32 UNJF-3A		SINGLE



**EMBOSSED PANEL APPLICATION**

**MATERIAL :**

STUD : 302 CRES PER AMS 5636 OR ASTM-A-493  
SLEEVE : BRASS ALLOY PER ASTM B 16/B 16M OR SAE AMS 4610.

FINISH : STUD & SLEEVE: AREAS VISIBLE AFTER INSTALLATION TO HAVE PAINTED FINISH MATCHING BOEING 'CLOUD WHITE' PER DN 0131 OR EQUIV. DN 7510 COLOR CHIP

**NOTES:**

- AREAS TO HAVE WHITE PAINTED FINISH: HEAD OF STUD, LIP AND INSIDE AREA OF SLEEVE
- CAPTIVE SCREW WEIGHT: 1.058 LBS/100
- PLB7900 -10 -F - 5 NOT AVAILABLE

**INSTALLATION TOOLS:**

COMPLETE ASSEMBLY HLB8603 -10  
INCLUDES NOSE PIECE, PULLER & HANDLE OR  
ARBOR PRESS TOOL HLB7600-10, ANVIL HLB7660-10,  
NOSE PIECE HLB7513-10, PULLER HLB7503-10,  
HANDLE ASSEMBLY TA 7533

K

THIS DRAWING, THE STRUCTURAL DESIGN DISCLOSED THEREIN AND THE TECHNICAL DATA AND ENGINEERING SERVICE REPRESENTED THEREBY ARE THE EXCLUSIVE PROPERTY OF HUCK INTERNATIONAL, INC.

ISSUED	8/27/2004	CAPTIVE SCREW, CROSS RECESS, SPECIAL SLEEVE	TOLERANCE UNLESS OTHERWISE NOTED: .X = ±.05 .XX = ±.02 .XXX = ±.015 ANGLES ±0.5°	DRAWN BY	J. SCHLOBOHM
	REVISIED		12/10/2012	APPROVED BY	SIGNATURE ON FILE
	PAGE		1 OF 1	<b>PLB 7900 S-1849</b>	