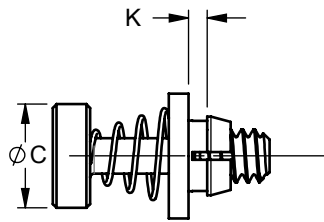
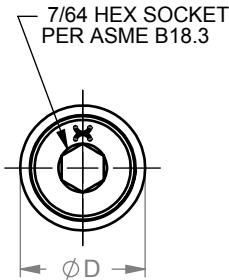
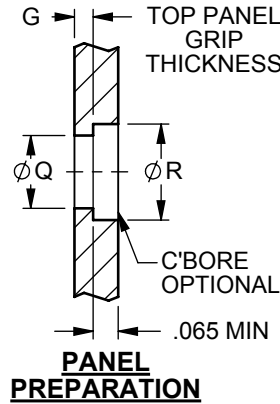


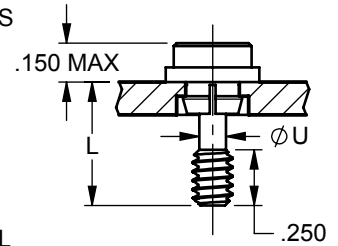
THIS DRAWING, THE STRUCTURAL DESIGN DISCLOSED THEREIN AND THE TECHNICAL DATA AND ENGINEERING SERVICE REPRESENTED THEREBY ARE THE EXCLUSIVE PROPERTY OF HUCK INTERNATIONAL, INC.



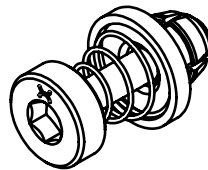
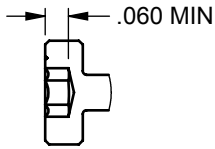
**SCREW ASSEMBLY  
BEFORE MOUNTING**



**PANEL  
PREPARATION**



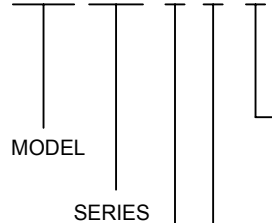
**SCREW ASSEMBLY  
AFTER MOUNTING**



THREAD SIZE CODE	Ø C MAX	Ø D ±.010	Ø Q +.004 - .001	Ø R +.020 - .000	Ø U +.005 - .000
6	.270	.325	.190	.219	.090

**PART NUMBER CALLOUT**

KWSP 7950L-( )-( )-( )



LENGTH CODE	L
7	.425
8	.500
9	.562
10	.625

GRIP CODE	G	
	TOP PANEL GRIP THICKNESS	K
A	.031-.049	.050
B	.050-.075	.076
C	.076-.105	.106

THREAD SIZE CODE	THREAD SIZE PER ASME B1.1
6	.138-32 UNC-3A

**NOTES:**

1. SCREW HAS .015 TOTAL FLOAT
2. DIRECT REPLACEMENT FOR CFBR7950L-6 CAPTIVE SCREW SERIES.

**MATERIAL:**

**SCREW:**

A-286 CRES PER AMS 5732 OR AMS 5737, HEAT TREAT TO 160KSI MIN. U.T.S

**SLEEVE:**

7075-T6 OR 7075-T4 ALUMINUM ALLOY PER AMS 4122 OR AMS QQ-A-225/9

**SPRING:**

302 CRES PER AMS 5688 OR ASTM-A-313

**FINISH:**

SCREW & SPRING: PASSIVATE PER AMS2700.  
SLEEVE: BLACK ANODIZE PER MIL-A-8625, TYPE II, CLASS 2

<b>A</b>	ECN 13593, NEW RELEASE		TOLERANCE UNLESS OTHERWISE NOTED: .X = ±.05 .XX = ±.02 .XXX = ±.015 ANGLES ±0.5°	DRAWN BY	JRH
	ISSUED	9/1/2016		CHECKED BY	SIGNATURE ON FILE
REVISED	09/01/2016	CAPTIVE SCREW, SNAP-IN, FLOATING, SPRING-LOADED, HEX SOCKET RECESS,		<b>KWSP7950L</b>	
PAGE	1 OF 1				
			DIMENSIONS IN INCHES		

This drawing/documentation is controlled by either the Department of State, International Traffic in Arms Regulations or the Department of Commerce, Export Administration Regulations and may require an export license. License exception prior to being transferred to a foreign national, inside or outside of the United States. EAR/ECCN EAR99. These commodities, technology or software were exported from the United States in accordance with the Export Administration Regulations. Diversion contrary to U.S. law prohibited.