

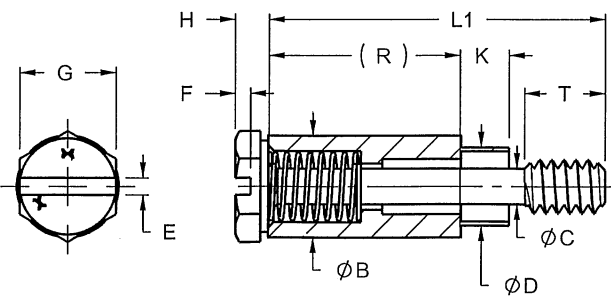
REV F

S-2705

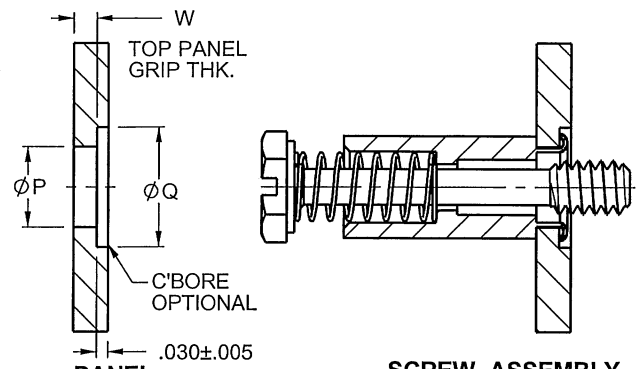
DRAWING NO.

**ORIGINAL**  
Red Ink Indicates  
Original Copy

THIS DRAWING, THE STRUCTURAL DESIGN DISCLOSED THEREIN, THE TECHNICAL DATA AND ENGINEERING SERVICE REPRESENTED THEREBY ARE THE EXCLUSIVE PROPERTY OF HUCK INTERNATIONAL, INC.



**SCREW ASSEMBLY BEFORE MOUNTING**



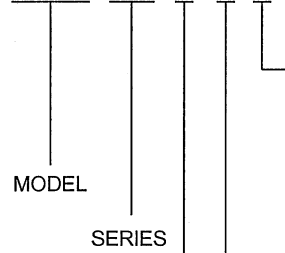
**PANEL PREPARATION**

**SCREW ASSEMBLY AFTER MOUNTING**

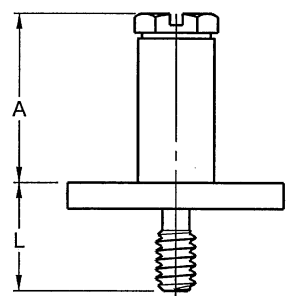
THREAD SIZE CODE	A ±.030	B	C +.000 - .005	D ±.005	E	F	G	H	P +.004 - .001	Q +.020 - .000	(R)	T	FLOAT +.004 - .003
6	.585	.265	.095	.202	.044	.040	.250	.080-.093	.209	.312	.498	.250	.026
8	.665	.300	.122	.215	.050	.060	.250	.095-.110	.221	.343	.562	.312	.027
10	.670	.312	.145	.250	.055	.065	.312	.105-.120	.257	.375	.557	.312	.030
12	.930	.437	.187	.313	.070	.090	.375	.172-.190	.323	.437	.749	.375	.035
14	.970	.505	.250	.375	.080	.110	.500	.208-.230	.385	.500	.751	.375	.040
16	1.110	.562	.312	.465	.085	.145	.562	.270-.295	.475	.625	.827	.437	.040

**PART NUMBER CALLOUT**

FKHRW 7900-( )-( )-( )



LENGTH CODE	L	(L1)					
		6	8	10	12	14	16
1.5	.312	.812	.875	.870	1.062	1.062	1.140
2	.375	.875	.937	.933	1.125	1.125	1.203
2.5	.437	.937	1.000	.995	1.187	1.187	1.265
3	.500	1.000	1.062	1.058	1.250	1.250	1.328
3.5	.562	1.062	1.125	1.120	1.312	1.312	1.390
4	.625	1.125	1.187	1.183	1.375	1.375	1.453
4.5	.688	1.187	1.250	1.246	1.437	1.437	1.516
5	.750	1.250	1.312	1.308	1.500	1.500	1.578
5.5	.812	1.312	1.374	1.370	1.562	1.562	1.640
6	.875	1.375	1.437	1.432	1.625	1.625	1.703
6.5	.937	1.437	1.500	1.496	1.687	1.687	1.765
7	1.000	1.500	1.562	1.558	1.750	1.750	1.828
7.5	1.062	1.562	1.625	1.620	1.812	1.812	1.890
8	1.125	1.625	1.687	1.683	1.875	1.875	1.953



**SCREW ASSEMBLY AFTER MOUNTING**

INSTALLATION TOOLS:  
( ) = THREAD SIZE CODE

ARBOR PRESS TOOL HW7600-( )

COMPLETE HAND TOOL ASSEMBLY:  
H8603-( ) INCLUDES NOSE PIECE, PULLER & HANDLE

NOSE PIECE HN7513-( ),  
PULLER HP7523-( ),  
HANDLE ASSEMBLY TA7533

**MATERIAL:**

STUD: 17-4 PH CRES STEEL PER AMS 5643,  
HEAT TREAT TO 190 KSI MIN, HRC 42-45

SLEEVE: 304 CRES PER AMS 5639 OR AMS-QQ-S-763

SPRING: 301 CRES PER AMS 5688 OR ASTM-A-313

**FINISH:**

ALL COMPONENTS: PASSIVATE PER AMS QQ-P-35

NOTE: THREAD AVAILABILITY TABLES ON SHEET 2

THREAD SIZE CODE	THREAD SIZE PER SAE-AS-8879
6	.138-32 UNJC-3A
8	.164-32 UNJC-3A
10	.190-32 UNJF-3A
12	.250-28 UNJF-3A
14	.312-24 UNJF-3A
16	.375-24 UNJF-3A

GRIP CODE	W TOP PANEL GRIP THICKNESS	K
A	.031-.062	.125
B	.063-.125	.187
C	.126-.187	.250
D	.188-.250	.312
E	.251-.312	.375
F	.313-.375	.437
G	.376-.437	.500

F	DCN 5556	08-09-07
REV	DESCRIPTION/EC NO.	DATE

UNLESS OTHERWISE SPECIFIED  
ALL DIMENSIONS IN INCHES

TOLERANCE UNLESS OTHERWISE NOTED:  
.X = ±.05      ANGLES ±0.5°  
.XX = ±.02  
.XXX = ±.015

**Alcoa Fastening Systems**  
ALCOA  
AEROSPACE FASTENER DIVISION  
3724 EAST COLUMBIA STREET  
TUCSON, ARIZONA 85714  
PHONE 520 519-7400  
FAX 520 519-7427  
www.alcoafasteners.com

TITLE <b>CAPTIVE SCREW, ALL SIZES, FULLY RETRACTABLE, HEX HEAD, SLOTTED RECESS</b>			
DATE 08/09/2007	PART NUMBER <b>FKHRW 7900</b>		
DRAWN JLS	DRAWING NO. <b>S-2705</b>		
CHECK <i>JLS</i>	CAGE CODE 0HDW7	REV <b>F</b>	
APPROVE	SCALE: 2:1	SHEET 1 OF 2	

REV

F

DRAWING NO.

S-2705

**ORIGINAL**  
**Red Ink Indicates**  
**Original Copy**

THIS DRAWING, THE STRUCTURAL DESIGN DISCLOSED THEREIN, THE TECHNICAL DATA AND ENGINEERING SERVICE REPRESENTED THEREBY ARE THE EXCLUSIVE PROPERTY OF HUCK INTERNATIONAL, INC.

T = THREAD LENGTH AVAILABILITY TABLE										
GRIP CODE	SIZE 6									
	1.5	2	2.5	3	3.5	4	4.5	5	5.5	8
A	.147	.210								
B		.147	.210							
C			.147	.210					.250	
D				.147	.210					
E					.147	.210				
F						.147	.210			
G							.147	.210		

T = THREAD LENGTH AVAILABILITY TABLE										
GRIP CODE	SIZE 8 AND 10									
	1.5	2	2.5	3	3.5	4	4.5	5	5.5	6-8
A	.147	.210	.272							
B		.147	.210	.272						
C			.147	.210	.272				.312	
D				.147	.210	.272				
E					.147	.210	.272			
F						.147	.210	.272		
G							.147	.210	.272	

T = THREAD LENGTH AVAILABILITY TABLE											
GRIP CODE	SIZE 12										
	1.5	2	2.5	3	3.5	4	4.5	5	5.5	6	6.5-8
A	.147	.210	.272	.335							
B		.147	.210	.272	.335						
C			.147	.210	.272	.335				.375	
D				.147	.210	.272	.335				
E					.147	.210	.272	.335			
F						.147	.210	.272	.335		
G							.147	.210	.272	.335	

T = THREAD LENGTH AVAILABILITY TABLE											
GRIP CODE	SIZE 14										
	1.5	2	2.5	3	3.5	4	4.5	5	5.5	6	6.5-8
A		.190	.252	.315							
B			.190	.252	.315						
C				.190	.252	.315				.375	
D					.190	.252	.315				
E						.190	.252	.315			
F							.190	.252	.315		
G								.190	.252	.315	

T = THREAD LENGTH AVAILABILITY TABLE												
GRIP CODE	SIZE 16											
	1.5	2	2.5	3	3.5	4	4.5	5	5.5	6	6.5	7-8
A		.190	.252	.315	.377							
B			.190	.252	.315	.377						
C				.190	.252	.315	.377				.437	
D					.190	.252	.315	.377				
E						.190	.252	.315	.377			
F							.190	.252	.315	.377		
G								.190	.252	.315	.377	



ASSEMBLIES NOT AVAILABLE

FULL THREAD LENGTH ASSEMBLIES AVAILABLE

F	DCN 5556	08-09-07
REV	DESCRIPTION/EC NO.	DATE

UNLESS OTHERWISE SPECIFIED  
 ALL DIMENSIONS IN INCHES

TOLERANCE UNLESS OTHERWISE

NOTED:

.X = ±.05

ANGLES ±0.5°

.XX = ±.02

.XXX = ±.015



**Alcoa Fastening Systems**

AEROSPACE FASTENER DIVISION  
 3724 EAST COLUMBIA STREET  
 TUCSON, ARIZONA 85714  
 PHONE 520 519-7400  
 FAX 520 519-7427  
[www.alcoafasteners.com](http://www.alcoafasteners.com)

TITLE

**CAPTIVE SCREW, ALL SIZES,  
 FULLY RETRACTABLE, HEX  
 HEAD, SLOTTED RECESS**

DATE  
08/09/2007PART NUMBER  
FKHRW 7900DRAWN  
JLSDRAWING NO.  
S-2705CHECK  
APPROVECAGE CODE  
0HDW7REV  
F

SCALE: 1:1

SHEET 2 OF 2