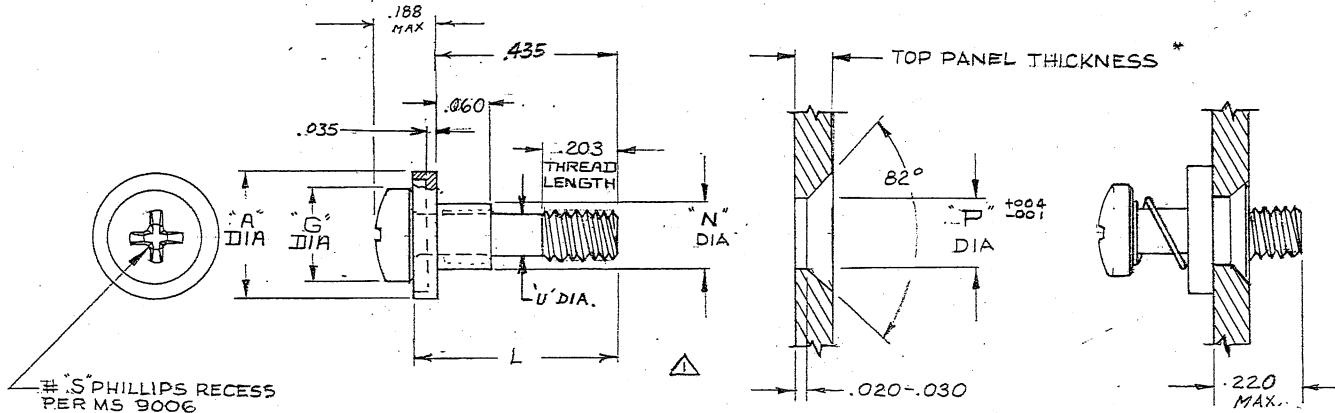


ORIGINAL Red Ink Indicates Original Copy



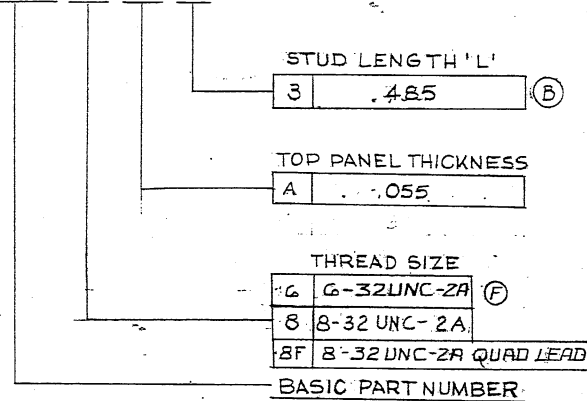
SCREW ASSEMBLY BEFORE MOUNTING

SCREW ASSEMBLY AFTER MOUNTING

INSTALLATION TOOL
ARBOR PRESS

PART NUMBER CALLOUT

DMG 7900 - 8 - A - 3



SIZE	"A" DIA	"G" DIA	"P" DIA	"S"	"N" DIA	"U" DIA
G	.313	.263	.209	6	.197 .207	.095 .090
8 & 8F	.365	.315	.213	8	.200 .211	.117 .122

MATERIAL:

SCREW: 4037 ALLOY STL (OR EQUIV.) MIL-S-8695 H.T. R_c 34-38
SLEEVE: BRASS PER QQ-B-626, COMP 22
SPRING: 302 CRES PER QQ-W-423 COMP, FS. 302, COND. B

FINISH:

ALL PARTS: CAD PLATE PER QQ-P-416, TYPE II, CL 2

DW 7600 - X
TOOL SIZE

△ MINIMUM TOTAL FLOAT OF SCREW: .030

G	U' CUT DIA. + .01 SPRING POCKET DEPTH ADDED	4/1 4/1	7-19-77
F	ADD SIZE G	NOG JEM	6-15-76
E	ADDED 8F SIZE	JEM	8/19/76
D	STUD LENGTH 'L' WAS .500	AUS AS	6-15-72
C	Revised	4/1 4/1	5-3-72
B	MAT. SPEC. OF STUD WAS 4037 STL 'L' WAS .500	AUS 4/1	4-13-72
A	MATERIAL REVISED SIZE 8 HARD SCHEDULED MATERIAL	4/1 4/1	5-31-72
NO.	CHANGE	BY	DATE

1. DE-BURR ALL SHARP EDGES

TOLERANCES	
FRACTIONS ± .015 DECIMALS ± .005 ANGLES ± 1/2° UNLESS OTHERWISE SPECIFIED	
MATERIAL NOTED	SPEC. NOTED
MATERIAL	SPEC.
HEAT TREAT	SPEC.
SPEC.	WT.

DEUTSCH FASTENER CORPORATION
7001 W. IMPERIAL HWY., LOS ANGELES, CALIF. 90045
FED. MFG. NO. 08524

SCREW, CAPTIVE, DMG 7900;
PHILLIPS RECESS, SPRING LOADED

DRAWN: JW MOLINA
CHECKED: [Signature]
APPROVED: [Signature]
DATE: 1-13-72 SCALE: [Signature]

THE FOLLOWING PATENTS
APPLY: 3,561,093
3,571,904 3,665,581

5-1185