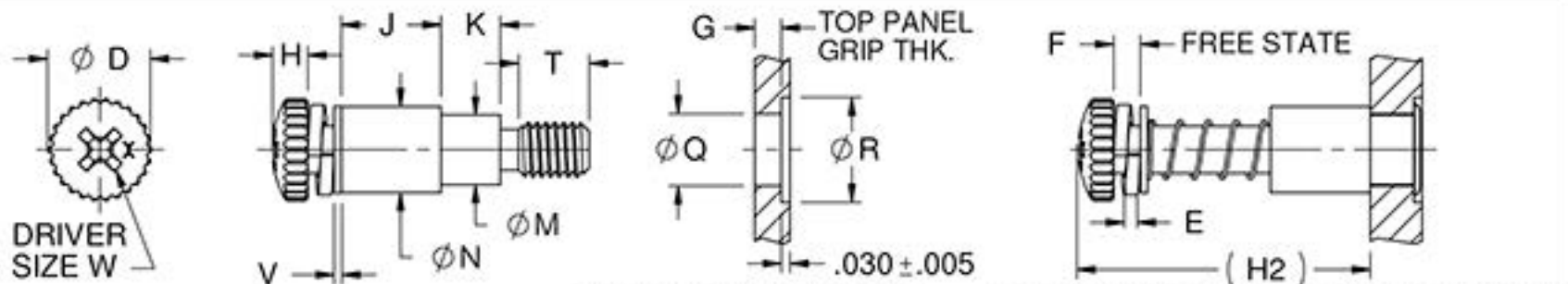




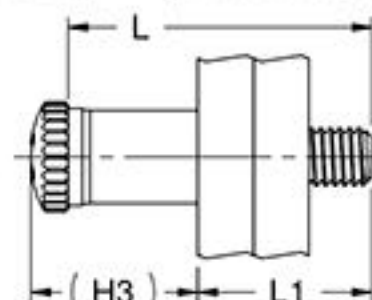
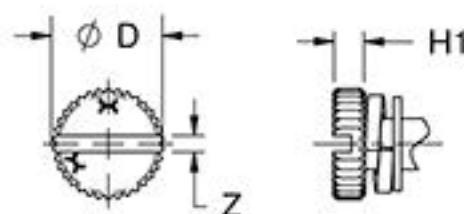
THIS DRAWING, THE STRUCTURAL DESIGN DISCLOSED THEREIN AND THE TECHNICAL DATA AND ENGINEERING SERVICE REPRESENTED THEREBY ARE THE EXCLUSIVE PROPERTY OF HUCK INTERNATIONAL, INC.



SCREW ASSEMBLY BEFORE MOUNTING

PANEL PREPARATION

SCREW ASSEMBLY AFTER MOUNTING



SCREW ASSEMBLY AFTER MOUNTING

THREAD SIZE CODE	ØD	E ±.005	F	H	H1	(H2)	(H3)	J	ØM ±.005	ØN ±.010	ØQ +.004 - .001	ØR +.020 - .000	T	V ±.005	W	Z
4	.212	.025	.050	.080	.068	.995	.500	.365	.178	.209	.187	.281	1	.016	1	.040
6	.263	.031	.062	.097	.082			.360	.202	.250	.209	.312		.016	2	.044
8	.314	.040	.080	.115	.096	1.035	.540	.345	.215	.300	.221	.343		.025	2	.049
10	.365	.047	.094	.133	.110			.550	.250	.312	.257	.375		.025	2	.055
12	.482	.062	.124	.175	.144	1.084	.697	.435	.316	.437	.323	.437		.025	3	.062

PART NUMBER CALLOUT

DS () () 7900 - () - () - ()

MODEL

SERIES

LENGTH CODE	L		L1 ±.020	LENGTH CODE	L		L1 ±.020
	4, 6, 8, 10	12			4, 6, 8, 10	12	
3	.750	.871	.345	6	1.125	1.246	.720
3.5	.812	.933	.407	6.5	1.187	1.308	.782
4	.875	.996	.470	7	1.250	1.371	.845
4.5	.937	1.058	.532	7.5	1.312	1.433	.907
5	1.000	1.121	.595	8	1.375	1.496	.970
5.5	1.062	1.183	.657	8.5	1.437	1.558	1.032

THREAD SIZE CODE	THREAD SIZE PER ASME B1.1	LEAD
4	.112-40 UNC-2A	SINGLE
6	.138-32 UNC-2A	
8	.164-32 UNC-2A	
10	.190-32 UNF-2A	
12	.250-28 UNF-2A	

GRIP CODE	G (TOP PANEL GRIP THICKNESS)	K ±.005
A	.031-.062	.085
BB	.041-.093	.115
B	.063-.125	.147
C	.126-.187	.210
D	.188-.250	.272
E	.251-.312	.335

RECESS CODE	DRIVING RECESS AND SPECIFICATION
C	CROSS RECESS PER NASM 9006
D	SLOT RECESS PER ANSIB18.6.3

CODE	FINISH
NONE	BLACK OXIDE
U	PASSIVATE

KEY

AE PER DCN 12954, CHANGED FROM Alcoa Fastening Systems AND AFS TO Alcoa Fastening Systems & Rings AND AFSR

TOLERANCE UNLESS OTHERWISE NOTED:
X = ±.05
XX = ±.02
XXX = ±.015
ANGLES ±0.5°

DRAWN BY J. SCHLOBOHM
CHECKED BY SIGNATURE ON FILE

ISSUED 11/29/2005
REVISED 3/31/2015
PAGE 1 OF 2

CAPTIVE SCREW, OPTIONAL RECESS, SPRING LOADED, ALL CRES, FULLY RETRACTABLE

DIMENSIONS IN INCHES

DS() () 7900 S-2006



THREAD LENGTH AVAILABILITY TABLES

2

GRIP CODE	SIZE 4							
	3	3.5	4	4.5	5	5.5	6	
A	.191							
BB	.161							
B	.128	.191					.203	
C		.128	.191					
D			.128	.191				
E				.128	.191			

2

GRIP CODE	SIZE 6							
	3	3.5	4	4.5	5	5.5	6	
A	.179							
BB	.149							
B	.117	.179					.203	
C		.117	.179					
D			.117	.179				
E				.117	.179			

GRIP CODE	SIZE 8							
	3	3.5	4	4.5	5	5.5	6	
A	.165	.228						
BB	.135	.197						
B	.103	.165	.228				.250	
C		.103	.165	.228				
D			.103	.165	.228			
E				.103	.165	.228		

GRIP CODE	SIZE 10							
	3	3.5	4	4.5	5	5.5	6	
A	.151	.213						
BB	.121	.183						
B		.151	.213				.250	
C			.151	.213				
D				.151	.213			
E					.151	.213		

GRIP CODE	SIZE 12							
	3	3.5	4	4.5	5	5.5	6	
A	.165	.228						
BB		.197	.260					
B		.165	.228				.281	
C			.165	.228				
D				.165	.228			
E					.165	.228		

ASSEMBLIES NOT AVAILABLE

NOTES UNLESS SPECIFIED OTHERWISE:

1. SEE APPROPRIATE THREAD LENGTH AVAILABILITY TABLE FOR "T" DIMENSION
2. DO NOT USE HAND TOOL ON 4 & 6 THREAD SIZE CODES.
3. FOR LONGER STUD/SHORT SLEEVE COMBINATIONS, EXTENSION DT257EN IS RECOMMENDED WITH HAND TOOL

MATERIAL

- STUD :
302 CRES PER ASTM-A-493, AMS 5636
- LOCKWASHER:
300 SERIES CRES PER AMS 5519 OR EQUIV.
- SLEEVE:
304 CRES PER AMS-QQ-S-763, AMS 5639
- SPRING:
302 CRES PER ASTM-A-313, AMS 5688
- FLAT WASHER:
300 SERIES CRES PER AMS 5519 OR EQUIV.

FINISH

- DSCU 7900 & DSDU 7900:
PASSIVATE PER AMS2700
- DSC 7900 & DSD 7900:
SPRING:
PASSIVATE PER AMS2700
- ALL OTHER COMPONENTS:
BLACK OXIDE PER MIL-DTL-13924, CLASS 4.

INSTALLATION TOOLS:
() = THREAD SIZE CODE

- 3 EXTENSION DT257EN
ARBOR PRESS TOOL HW7600-()
NOSE PIECE HN7513-()
PULLER HP7523-()
- 2 HANDLE ASS'Y TA7533

* LENGTH CODES NOT SHOWN ARE AVAILABLE WITH THE LONGER THREAD LENGTH PER APPLICABLE TABLE

AE PER DCN 12954, CHANGED FROM Alcoa Fastening Systems AND AFS TO Alcoa Fastening Systems & Rings AND AFSR

ISSUED 11/29/2005
REVISED 3/31/2015
PAGE 2 OF 2

CAPTIVE SCREW, OPTIONAL RECESS,
SPRING LOADED, ALL CRES, FULLY RETRACTABLE

TOLERANCE UNLESS OTHERWISE NOTED:
X = ±.05
XX = ±.02
XXX = ±.015
ANGLES ±0.5°
DIMENSIONS IN INCHES

DRAWN BY J. SCHLOBOHM
CHECKED BY SIGNATURE ON FILE
DS() () 7900
S-2006